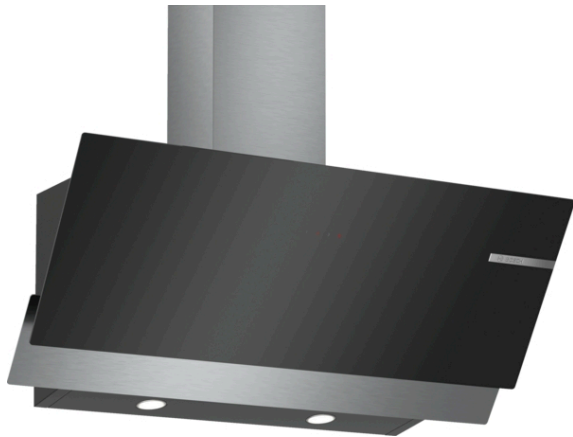


**Series 4, wall-mounted cooker hood,
90 cm, clear glass black printed
DWK96AJ60M**



**The wall-mounted chimney hood: mount it
on the wall, giving you complete freedom in
your kitchen planning.**

- **Silent:** maximal extractor performance with little noise
- With exhaust, the air is cleaned by a grease filter and then ducted to the outside which ensures optimal kitchen air quality.
- 3-Speed Power Level Options To Suit Your Cooking Style And Recipes

Technical Data

Typology : Wall-mounted
 Length electrical supply cord : 200 cm
 Height of product, without chimney : 350 mm
 Net weight : 16.6 kg
 Type of control : Electronic
 Number of speed settings : 3
 Maximum output air extraction : 638 m³/h
 Maximum output recirculating air : 290 m³/h
 Number of lights : 2
 Noise level : 64 dB(A) re 1 pW
 Diameter of air outlet : 120 / 150 mm
 Grease filter material : Washable aluminium
 Odour filter : No
 Operating Mode : Convertible
 Optional accessories : DWA0LK6A
 Grease filter type : Kasette
 Connection Rating : 216 W
 Voltage : 220-240 V
 Frequency : 50 Hz
 Plug type : GB plug
 Installation typology : Wall-mounted
 Material body : Glass, Lacquered
 Plug type : GB plug
 Dimensions of the product, with chimney (if exists) (in) : / x x
 Dimensions of the packed product : 17.91 x 27.36 x 17.91
 Net weight : 37.000 lbs
 Gross weight : 41.000 lbs
 Motor location : Integrated motor in hood body
 No-return airflow flap : No
 Length electrical supply cord : 200 cm
 Dimensions of the product, with chimney (if exists) : x 896.0 x 386.0 mm
 Dimensions of the packed product (HxWxD) : 455 x 695 x 455 mm
 Net weight : 16.6 kg
 Gross weight : 18.6 kg



**Series 4, wall-mounted cooker hood, 90 cm,
clear glass black printed
DWK96AJ60M**

**The wall-mounted chimney hood: mount it
on the wall, giving you complete freedom in
your kitchen planning.**

Variant:

Design:

- Wall mounted hood
- 90 cm Chimney hood
- 896 mm width
- black with glass canopy

Comfort:

- Suitable for ducted or re-circulated extraction
- Recirculating kit
- TouchControl with Electronic display
- Electronic via TouchControl with Electronic display
- 3 speeds
- Metal grease filter, dishwasher safe
- Filter cover glass

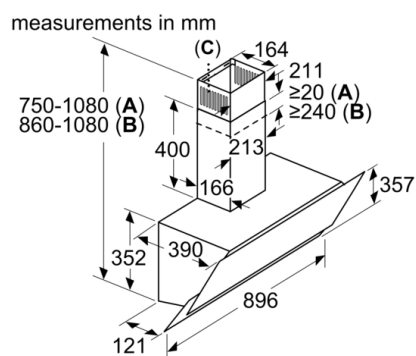
Environment and safety:

Technical information:

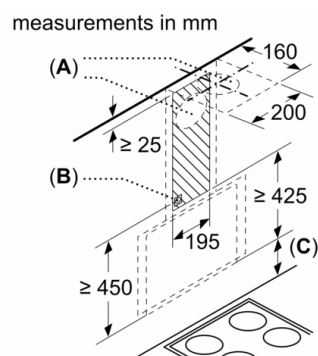
Measures:

- Dimensions exhaust air (HxWxD): 750-1080 x 896 x 386 mm
- Dimensions recirculating (HxWxD): 860-1080 x 896 x 386 mm
- Diameter pipe Ø 150 mm (Ø 120 mm enclosed)

**Series 4, wall-mounted cooker hood, 90 cm,
clear glass black printed
DWK96AJ60M**



- A:** Exhaust air
B: Circulated air
C: Air outlet – slots for exhaust air to be mounted facing down



- A:** Exhaust air outlet
B: Socket
C: min. 470 electric / min. 570 gas, from upper edge of pan support

